

PANDA 54 CELL SERIES 2

Monocrystalline



250Wp

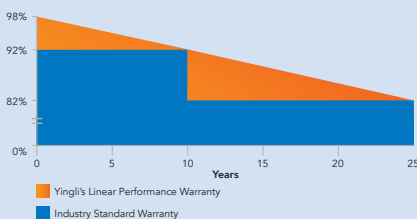
19.8%

CELL EFFICIENCY

10 YEAR

PRODUCT WARRANTY

25 year Linear Performance Warranty



panda
Powered by YINGLI



MORE ENERGY NOW FITTING ONTO SMALL ROOFS

Photovoltaic panels with our cutting-edge PANDA technology generate more energy, especially during mornings, evenings and winter months. Now available in a compact size allowing to fit more power onto small roofs.



Compact - Fits onto most roofs

This compact version of the powerful PANDA module fits even onto small roofs or those where windows and chimneys are getting in the way.



Low Light Performance

PANDA technology is highly sensitive to photons (light energy), hence it continues to produce energy even at low light levels. The result is a higher yield from your system.



High Power Density

PANDA technology has a higher efficiency than other technologies, so PANDA modules make the best out of each m².



PID Resistant

Tested in accordance to the draft standard IEC 62804, our PV modules have demonstrated resistance against PID (Potential Induced Degradation), which translates to security for your investment.

Yingli Green Energy

Yingli Green Energy Holding Company Limited (NYSE: YGE), known as "Yingli Solar," is the world's largest photovoltaic module manufacturer in terms of production capacity. We are a leading solar energy company built upon proven product reliability and sustainable performance.

PANDA 54 CELL 250W SERIES 2

ELECTRICAL PERFORMANCE

Electrical parameters at Standard Test Conditions (STC)

| Module type | YL250C-27b | | |
|-------------------------|------------------|---|---------|
| Power output | P_{max} | W | 250 |
| Power output tolerances | ΔP_{max} | % | + / - 3 |
| Module efficiency | η_m | % | 16.9 |
| Voltage at P_{max} | V_{mpp} | V | 27.8 |
| Current at P_{max} | I_{mpp} | A | 8.99 |
| Open-circuit voltage | V_{oc} | V | 34.9 |
| Short-circuit current | I_{sc} | A | 9.58 |

STC: 1000W/m² irradiance, 25°C cell temperature, AM1.5g spectrum according to EN 60904-3. Average relative efficiency reduction of 1.9% at 200W/m² according to EN 60904-1.

Electrical parameters at Nominal Operating Cell Temperature (NOCT)

| | | | |
|-----------------------|-----------|---|-------|
| Power output | P_{max} | W | 182.4 |
| Voltage at P_{max} | V_{mpp} | V | 25.2 |
| Current at P_{max} | I_{mpp} | A | 7.24 |
| Open-circuit voltage | V_{oc} | V | 32.4 |
| Short-circuit current | I_{sc} | A | 7.73 |

NOCT: open-circuit module operation temperature at 800W/m² irradiance, 20°C ambient temperature, 1m/s wind speed.

THERMAL CHARACTERISTICS

| | | | |
|--------------------------------------|----------------|------|----------|
| Nominal operating cell temperature | NOCT | °C | 46 +/- 2 |
| Temperature coefficient of P_{max} | γ | %/°C | -0.42 |
| Temperature coefficient of V_{oc} | β_{Voc} | %/°C | -0.30 |
| Temperature coefficient of I_{sc} | α_{Isc} | %/°C | 0.04 |
| Temperature coefficient of V_{mpp} | β_{Vmpp} | %/°C | -0.40 |

OPERATING CONDITIONS

| | |
|---|---------------------|
| Max. system voltage | 1000V _{DC} |
| Max. series fuse rating | 15A |
| Limiting reverse current | 15A |
| Operating temperature range | -40°C to 85°C |
| Max. static load, front (e.g., snow) | 5400Pa |
| Max. static load, back (e.g., wind) | 2400Pa |
| Max. hailstone impact (diameter / velocity) | 25mm / 23m/s |

CONSTRUCTION MATERIALS

| | |
|--|---|
| Front cover (material / thickness) | low-iron tempered glass / 3.2mm |
| Backsheet (color) | white |
| Cell (quantity / material / dimensions) | 54 / monocrystalline silicon / 156mm x 156mm |
| Frame (material / color / anodization color) | anodized aluminum alloy / silver or black / clear |
| Junction box (protection degree) | ≥ IP65 |
| Cable (positive length / negative length / cross-sectional area) | 1000mm / 4mm ² |
| Plug connector (type / protection degree) | MC4 / IP67 or YT08-1 / IP67 or Amphenol H4 / IP68 |

- Due to continuous innovation, research and product improvement, the specifications in this product information sheet are subject to change without prior notice. The specifications may deviate slightly and are not guaranteed.
- The data do not refer to a single module and they are not part of the offer, they only serve for comparison to different module types.

QUALIFICATIONS & CERTIFICATES

IEC 61215, IEC 61730, CE, MCS, ISO 9001:2008, ISO 14001:2004, BS OHSAS 18001:2007, PV Cycle, SA 8000



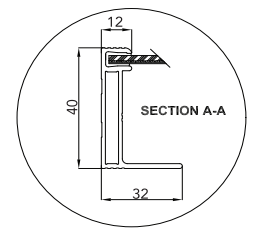
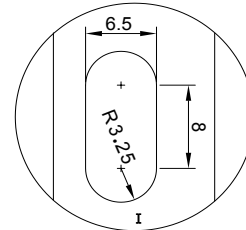
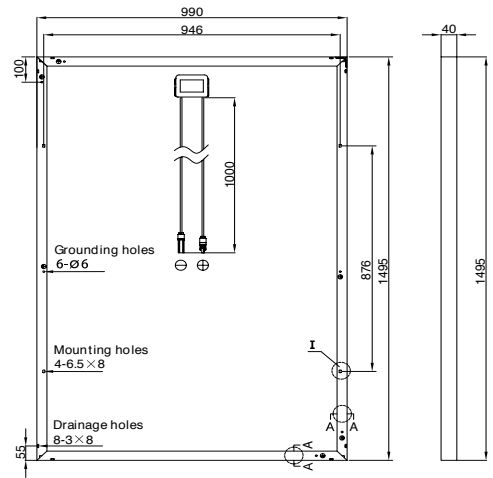
GENERAL CHARACTERISTICS

| | |
|------------------------|-----------------------|
| Dimensions (L / W / H) | 1495mm / 990mm / 40mm |
| Weight | 16.9kg |

PACKAGING SPECIFICATIONS

| | |
|--------------------------------------|--------------------------|
| Number of modules per pallet | 26 |
| Number of pallets per 40' container | 28 |
| Packaging box dimensions (L / W / H) | 1555mm / 1160mm / 1165mm |
| Box weight | 470kg |

Unit: mm



Warning: Read the Installation and User Manual in its entirety before handling, installing, and operating Yingli Solar modules.

Yingli Partners:

Yingli Green Energy Holding Co. Ltd.

service@yingli.com

Tel: 0086-312-2188055

YINGLISOLAR.COM

